
寄件者: George Lee <[REDACTED]>
寄件日期: 2025年12月04日星期四 15:11
收件者: Ivan Sze Yuet FUNG/PLAND
主旨: RE: F.I. to Application for Renewal of Planning Permission (Ref. No. A/YL-KTN/1188)
附件: Drainage Record with Photos_AYL-KTN1188_04-12-2025.pdf
類別: Internet Email

Dear Mr. Fung,

Please find attached the drainage record with photos from the last submission for your reference. Thank you for your attention.

Best regards,

George Lee

BMI Appraisals Limited



Scan this or follow us on WeChat : **BMIGroup**
掃描微信二維碼，歡迎關注邦盟匯駿集團微信

BM Intelligence growing your business

****A reputable and well-established company specializing in business, financial and corporate consultancy services in Hong Kong and China.**

****One of the leading professional valuers securing most listing projects on the Hong Kong Stock Exchange.**

****One of the few organizations having the capability of offering both fund management and individual professional services.**

The information transmitted is intended only for the person or entity to which it is addressed and may contain confidential and/or privileged material. Any review, retransmission, dissemination or other use of, or taking of any action in reliance upon, this information by persons or entities other than the intended recipient is prohibited.

If you received this in error, please contact the sender and delete the material from any computer.

13-6-2023

保魚已寄

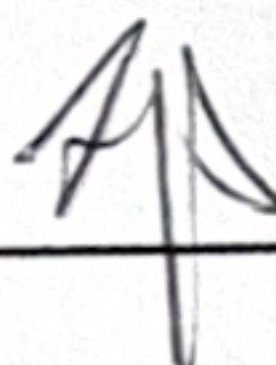
申請名稱：YAU FOOK HOLDING DEVELOPMENT LIMITED

申請編號：TPB/A/YL-KTN/872

申請地址：Lots 409S.A(Part) and 413 in D.D.110,Pat Heung,
Yuen Long, N.T.

規劃許可續期附帶條件：項目(h)渠道報告.

補充文件：渠道平面圖, 渠道相片及相片位置圖.


_____.

聯絡人：鄧鈞德

聯絡電話：92855776 電郵地址：harveytak@yahoo.com.hk

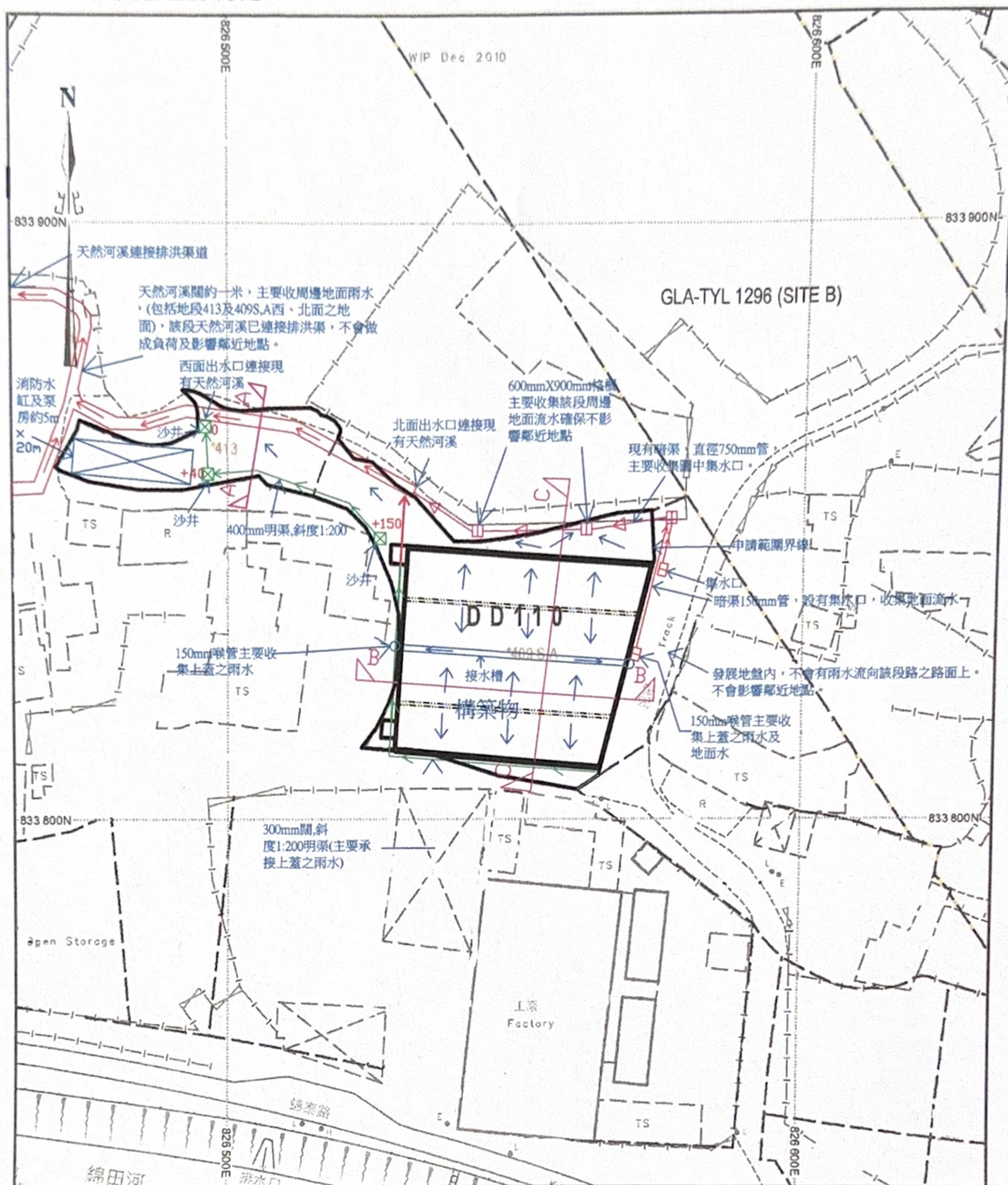
通訊地址：33 TSAT SING KONG TSUEN,PAT HEUNG,YUEN
LONG,N.T.






日期：2023 年 6 月 13 日

發展地盤排水渠平面圖

Ref:TPB/A/YL-KTN/872

日期: 13-6-2023



	原有天然河溪
	現有暗渠直徑750mm
	現有暗渠
	沙井
	地面流水方向
	構築物
	集水口
	400mm明渠流水方向

SCALE 1:1000

metres 10 0 10 20 30 40 50 metres

附注：

(1)申請位置北面之中轉屋興建地盆已展開工程，並於地盤內建造新的排水管道，以承接北至東方之雨水及地面水，而能夠減輕現有的排水設施負荷。

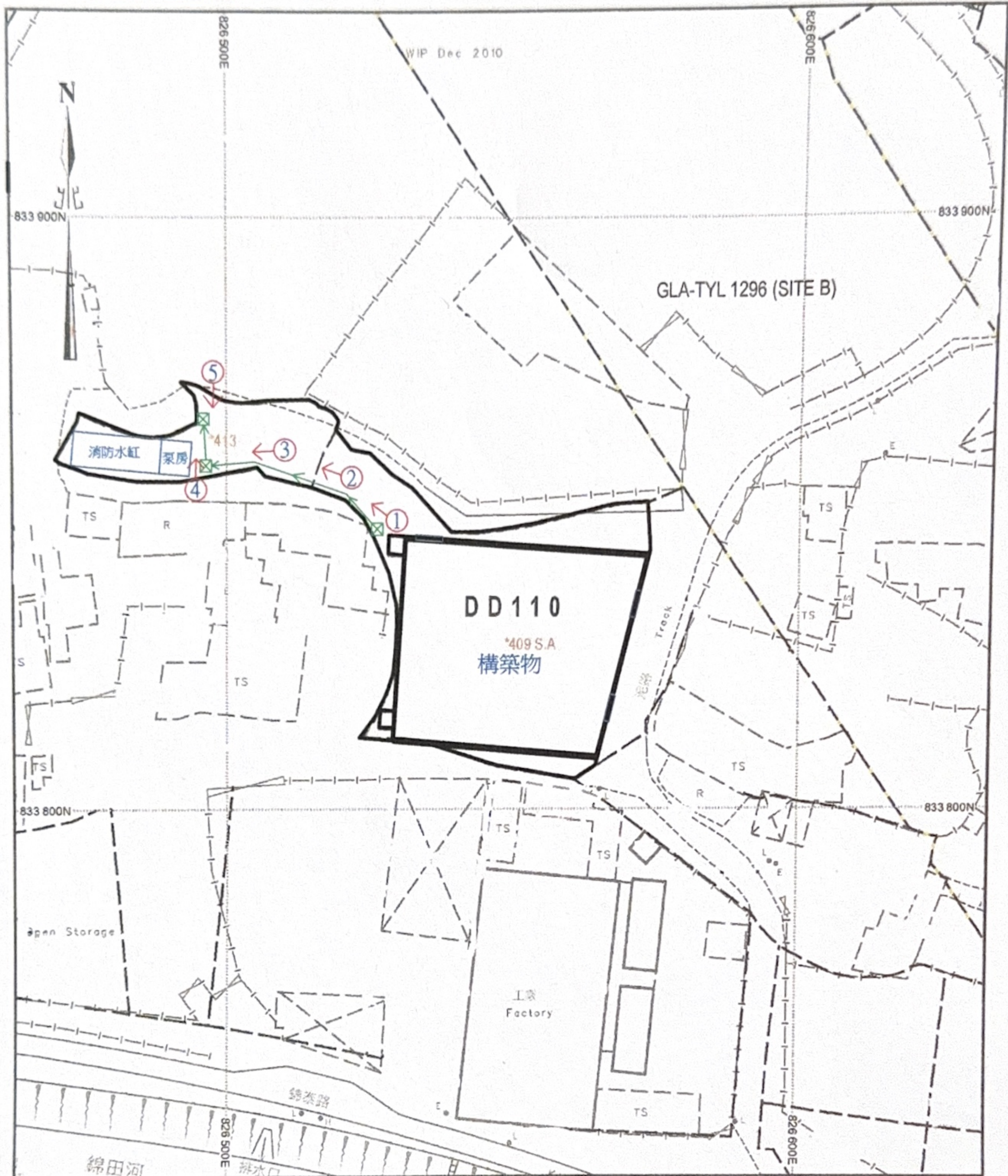
(2)以上工程發展不會阻礙地面的水流、天然河流、鄉村渠道、溝渠及鄰近地點。

(3)申請人承諾以上有關渠務設施，將不時清理及定期保養維修。

拍照相片位置圖

Ref:TPB/A/YL-KTN/872

日期: 13-6-2023



SCALE 1:1000

metres 10 0 10 20 30 40 50 metres

1a.



1b.



2a.



2b.



3a.



3b.



4a.



4b.



5.

